



SEVENOAKS RUGBY CLUB

FOUNDED: 1925

The Paddock Project 2010

Background

- SRFC - a successful amateur junior rugby club
- Five senior sides playing league rugby
- 1st XV competes in London SE2 against some semi-professional sides
- 520 minis and juniors – largest junior club in SE
- 65 trained volunteer junior coaches
- 20+ schoolboy and 3 full internationals (inc. a British Lion) learnt their rugby at Sevenoaks
- Present clubhouse built 1978 but
- **...facilities need updating**



Changes since 1978

- All senior sides are now playing in leagues
- Increase in size of squads and back up personnel
- Appointed Rugby Development Officer and senior coaches
- Massive growth in minis and juniors
- Development of the Academy squad
- Demand for 'big screen' events
- New requirements e.g. disabled access



The Sevenoaks Community

- Largest youth facility outside mainstream education
- Tag rugby coaching in a dozen primary schools
- Host of annual tag rugby tournament for 200+ girls and boys
- Provides coaching and referees for Wildernesse School
- Host of annual Wildernesse tournament
- Perception of what a clubhouse should offer



Improve facilities and look of the clubhouse

- Separate 'clean' and 'dirty' entrances
- Increase size of changing rooms
- Facilities for female officials
- Storage for teams' and players' kit
- Upgrade the entrance and stairway area
- Permanent big screen with Sky Sports
- Improve character and ambience
- Upgrade bar and kitchen
- Upgrade and improve toilet facilities



What needs to be done?

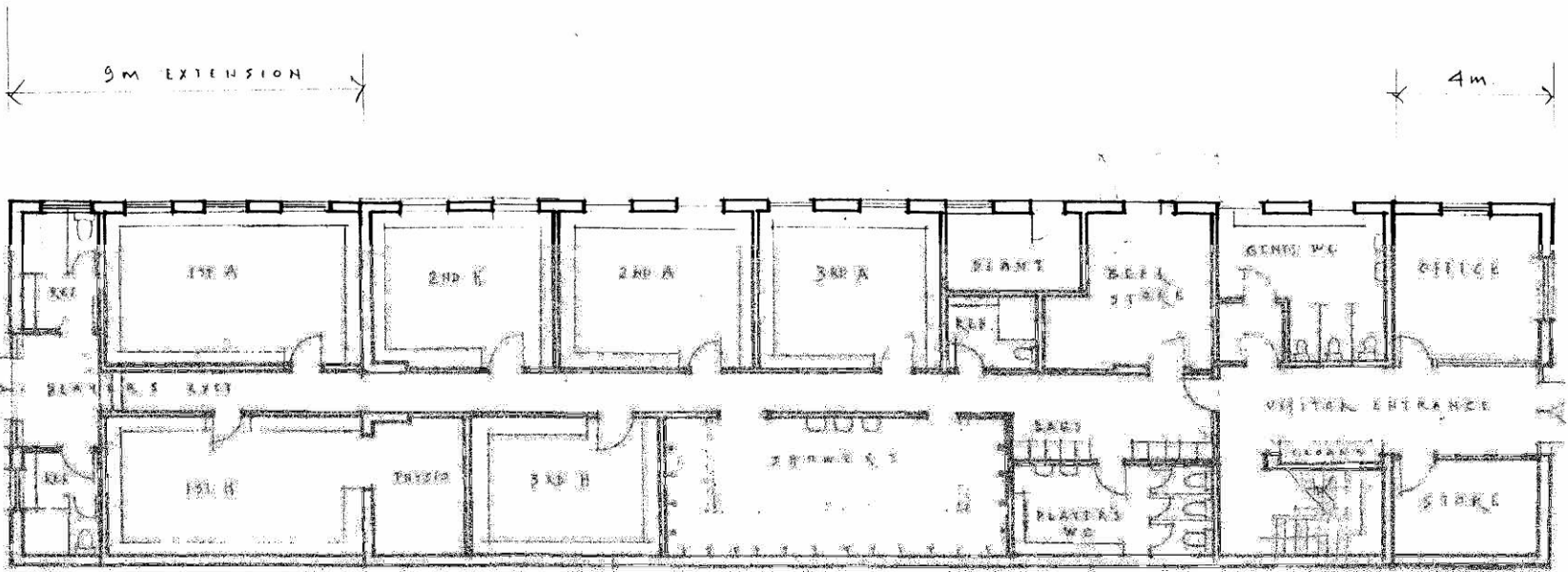
- Downstairs extension at south end
 - Players' only entrance
 - Players' toilets
 - Physio room
 - Bigger changing rooms
 - Space for personal kitbags
 - New officials' changing facilities inc. female's
 - New boiler and hot water system



What needs to be done?

- Downstairs extension at north end
 - Carpeted entrance
 - Trophy cabinet
 - Contribution acknowledgement wall
 - Storage and office
 - Upgrade gents toilets





LOW LEVEL GROUND

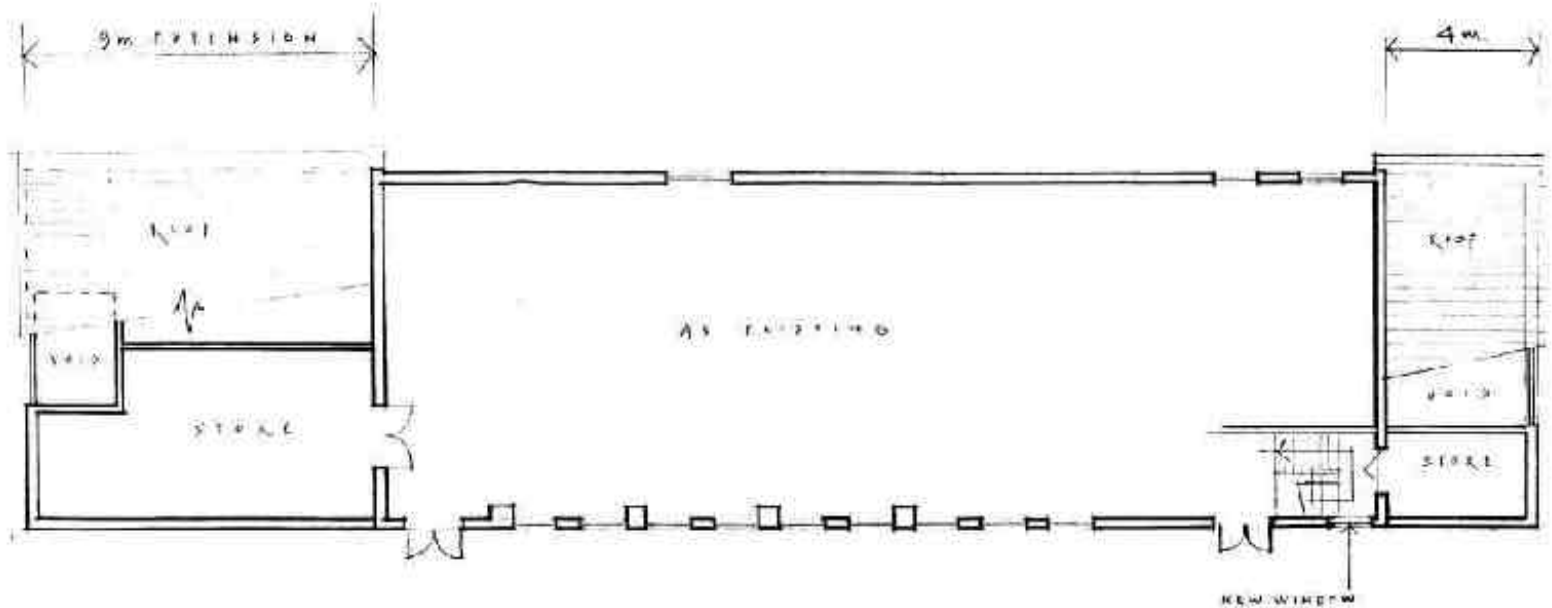
jhd



What needs to be done?

- Upstairs
 - Increase floor space with new storage area
 - Big screen
 - Refurbishment of bar and kitchen
 - Refurbishment of female toilets
 - Disabled access and toilet
 - Restore committee room
- Overall - build to allow for future expansion





UPPER FLOOR



NEWCASTLE HULL CITY CLUB
 ARCHITECT DESIGN
 100
 100
 100
 100

jhd
 JON HUGHES DESIGN
 CHARTERED ARCHITECTS
 100
 100
 100
 100



SOUTH WEST



NORTH EAST



SEYMOUR'S HURRY CLUB
CONCEPT DESIGN
South West &
North East Elevations
Scale: 1:100
Date: January 2010
Drawing No: 100/02

jhd
JON HUGHES DESIGN
REGISTERED ARCHITECT
Coomage Park, Lough Keel, 9900 BFW
01702 461940
jhd@jonhughesdesign.com

Timetable - 2010

- Launch
- Fund raising
- Start
- Completion
- February
- February onwards
- Summer 2010
- Season 2010/11

Minimum disruption to playing and to our tenants



Cost?

- **Playing (essential)**
 - Ground floor £250,000
- **Recreational (proactive)**
 - Upstairs £100,000
- **TOTAL** £350,000

All numbers include a contingency and VAT



Funding

- Club funds
- RFU grant
- Club sponsors
- Local and national organisations
- But above all.....
-**fundraising from the membership**

